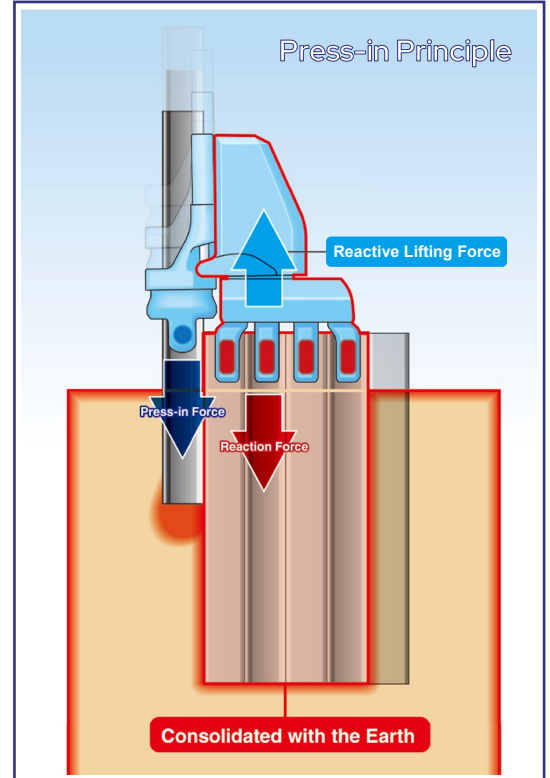
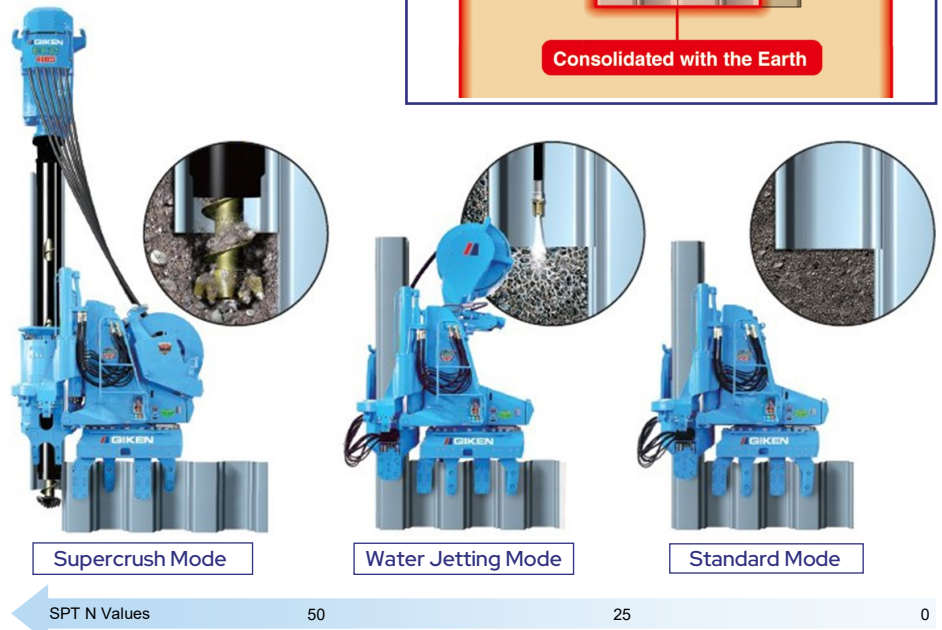
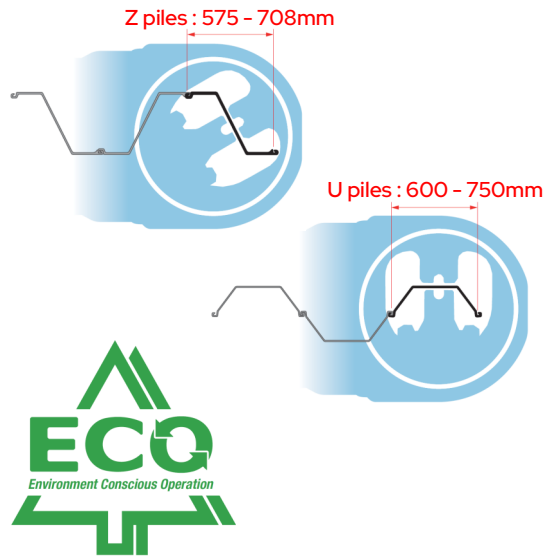


Giken F301 & ECO700S Silent Pilers



F301 & ECO700S are designed to press-in Z piles up to 708mm wide and U piles up to 750mm wide

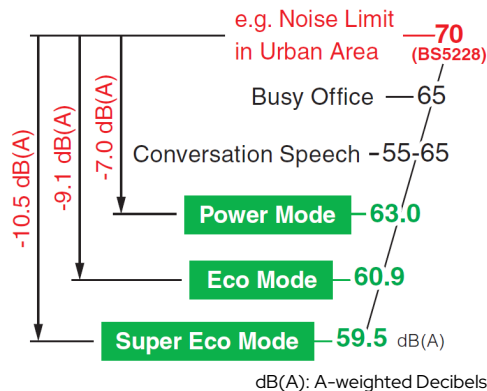


Low Emission Engine

The Giken Power Unit is designed to meet strict environmentally-friendly specifications, encompassing clean emissions combined with high combustion efficiency and Giken's hydraulic control technology.

Ultra Low Noise Levels

Designed to operate well within allowable construction noise levels

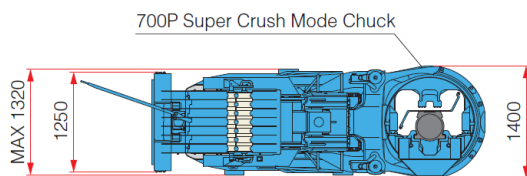
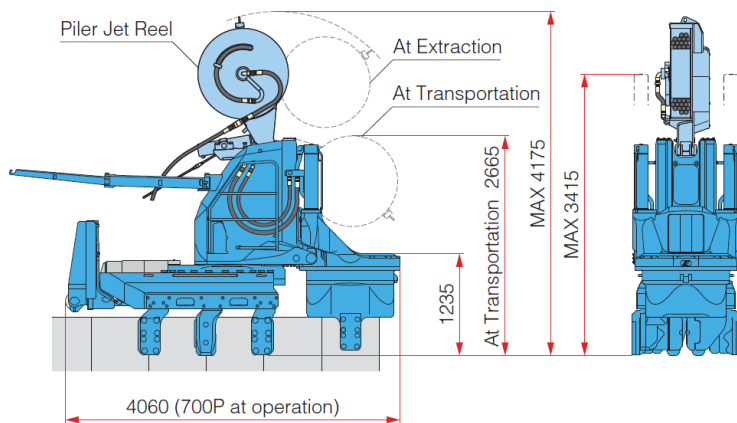
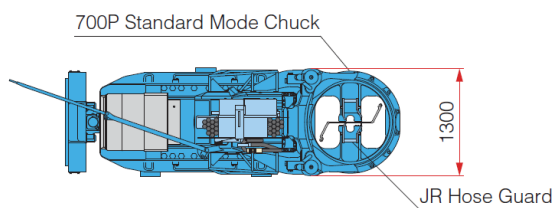
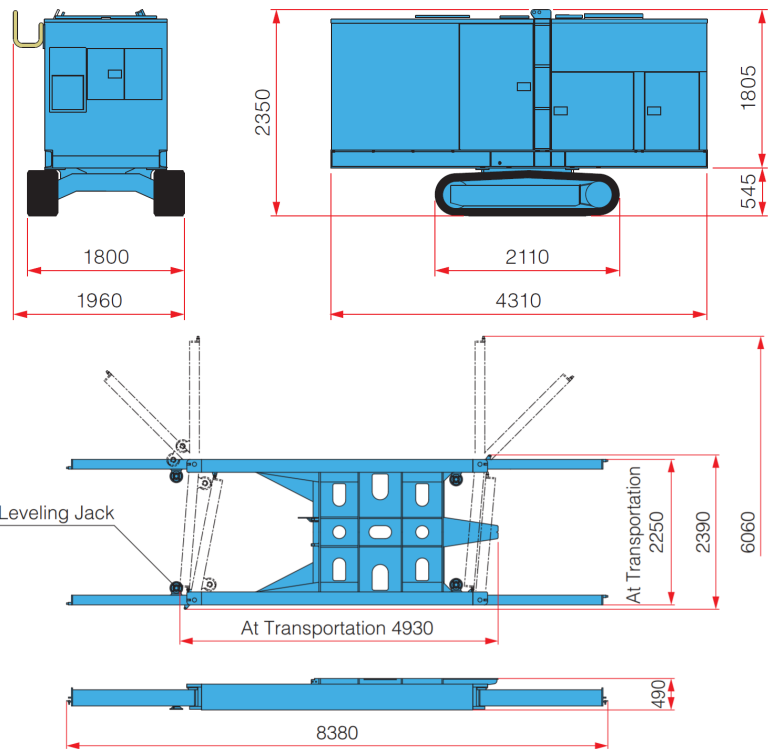


Standard Application of Bio-degradable Oil

Giken uses bio-degradable Piler Eco Oil and Piler Eco Grease as standard. Therefore, if hydraulic oil or grease is spilled into soil or water, there will be no environmental damage to the surrounding eco-system. In addition, our machines are painted with TX-Free non-lead paint*

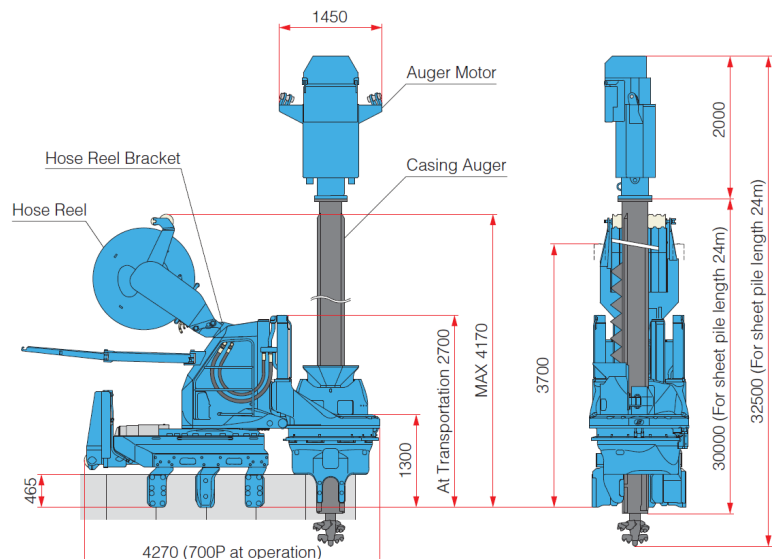
* Environmentally-friendly paint which does not contain toluene, xylene or lead based pigment.

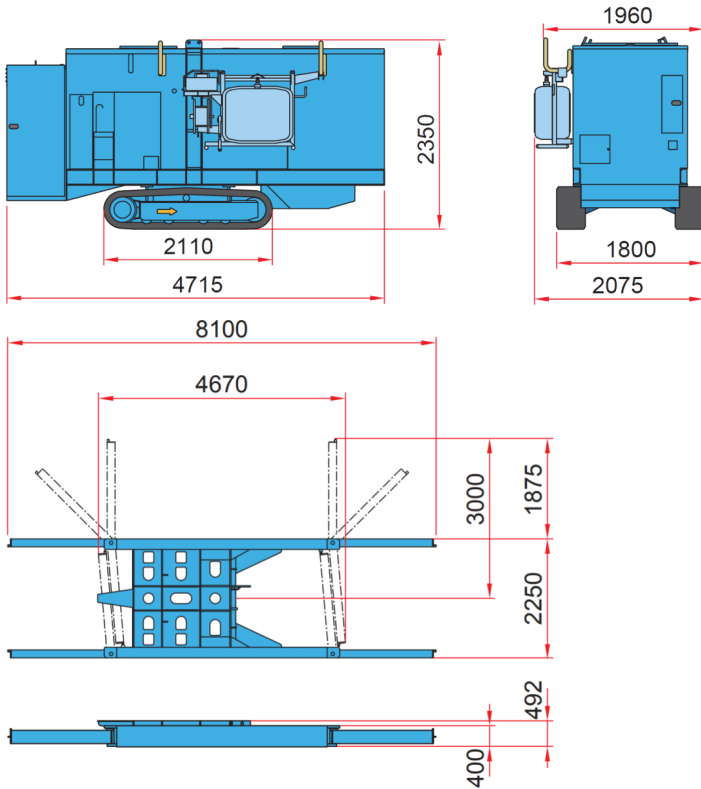
Power Unit	Giken F301
Power source	Diesel Engine - EU300K4
Rated output	Power mode: 265 kW / 1800 min ⁻¹
	ECO Mode : 236 kW / 1600 min ⁻¹ Super Eco Mode: 206 kW / 1400 min ⁻¹
Fuel tank capacity	600 litres
Hydraulic reservoir	Piler ECO Oil 630 litres
Urea additive tank capacity	38 litres
Moving speed	1.4 km/h
Weight	7250 kg (with 20 m hose)
Reaction Stand (with Levelling Jack)	
Weight	3000 kg



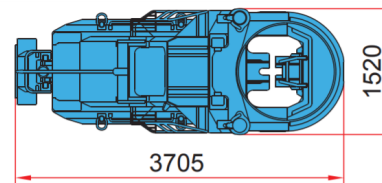
Standard & Water Jet Mode		F301
Max. Press-in force		1000 kN
Max. Extraction force		1200 kN
Stroke		850 mm
Press-in speed		2.0 - 43.5 m/min
Extraction speed		1.5 - 32.3 m/min
Control system		Radio control
Movement		Self movement
Weight	Main body	11700 kg
	Main body + piler jet reel	12480 kg
Piler Jet Reel		JR22
Applicable pile length		Standard 16.0 m Max. 26.0 m
Jet water volume		Max 700 litres/min
Jet water pressure		Max 15.0 Mpa (153 kgf/cm ²)
Weight (inc standard length of Piler ECO Hose)		780 kg

Supercrush Mode	F301
Max. Press-in force	800 kN
Max. Extraction force	900 kN
Stroke	850 mm
Control system	Radio control
Movement	Self movement
Weight (main body + hose reel)	15630 kg
Hose Reel	
Mass (standard)	2780 kg (inc. hose reel bracket)
Pile Auger	
Applicable pile length (standard)	Max 24 m
Weight	Auger Motor 1850 kg Casing Auger 10050 kg
Total Weight	11900 kg

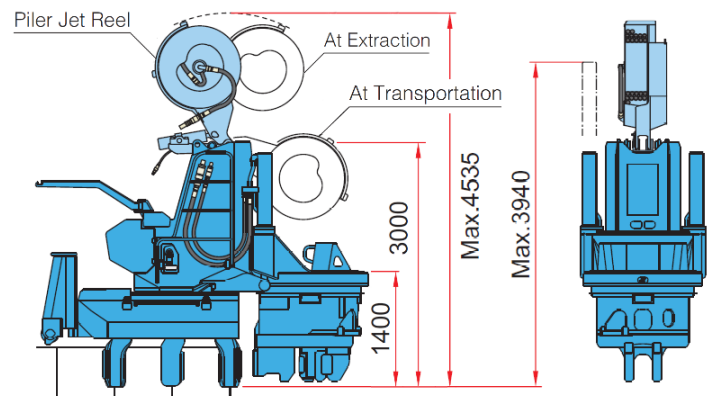




Power Unit		Giken ECO700S
Power source	Diesel Engine - EU300G3	
Rated output	Power mode: 230 kW / 1800 min ⁻¹	
	ECO Mode : 204 kW / 1600 min ⁻¹	
Fuel tank capacity	500 litres	
Hydraulic reservoir	Piler ECO Oil 630 litres	
Moving speed	1.4 km/h	
Weight	7780 kg	
Reaction Stand (with Levelling Jack)		
Weight	2950 kg	



Standard & Water Jet Mode		ECO700S
Max. Press-in force	1100 kN	
Max. Extraction force	1200 kN	
Stroke	1100 mm	
Press-in speed	2.8 - 37.3 m/min	
Extraction speed	1.0 - 29.8 m/min	
Control system	Radio control	
Movement	Self movement	
Weight	Main body	14500 kg
	Main body + piler jet reel	15580 kg
Piler Jet Reel		JR22
Applicable pile length	Standard 16.0 m Max. 26.0 m	
Jet water volume	Max 700 litres/min	
Jet water pressure	Max 15.0 Mpa (153 kgf/cm ²)	
Weight (inc standard length of Piler ECO Hose)	780 kg	

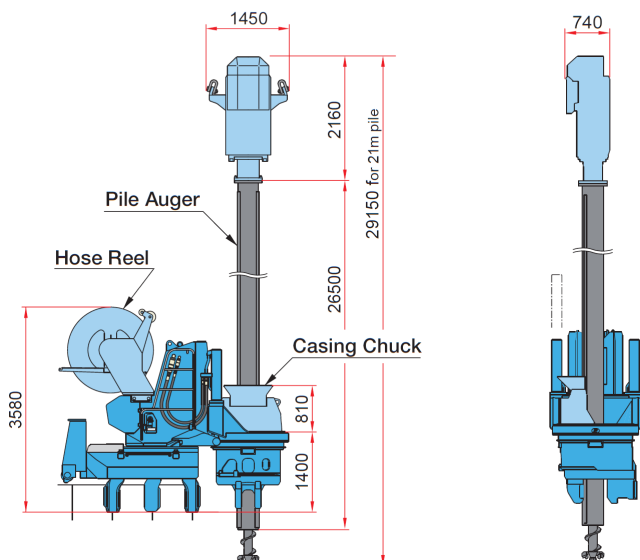


Supercrush Mode		ECO700S
Max. Press-in force	820 kN	
Max. Extraction force	1200 kN	
Stroke	1100 mm	
Pressing-in speed	0.5 - 4.5 m/min	
Drawing-out speed	0.7 - 3.1 m/min	
Weight (inc. casing chuck + hose-reel)	18450 kg	

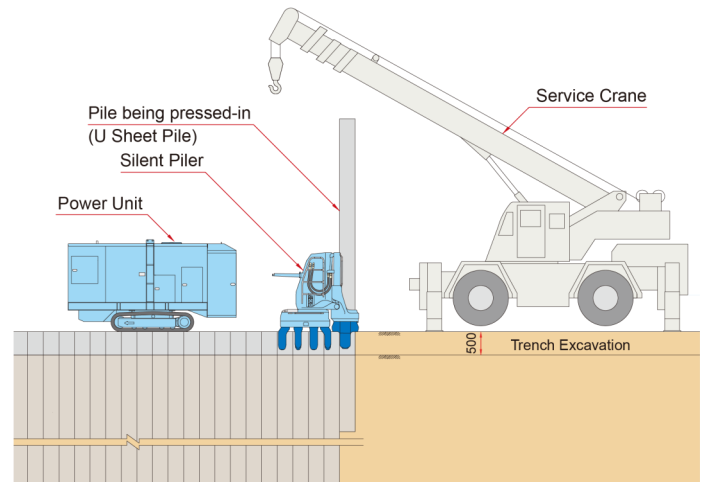
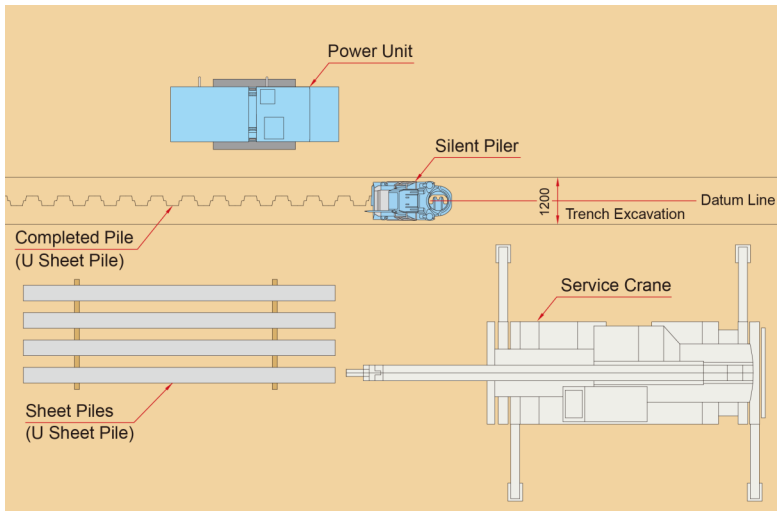
Pile Auger	
Auger torque	28 - 62 kNm
Rotation speed	10 - 35 min ⁻¹
Sheet pile length	Max 21 m
Auger motor weight	2000 kg
Total pile auger weight	11000 kg (for 21m pile)

Casing Chuck	
Down force	375 kN
Up force	500 kN
Stroke	500 mm
Down speed	Max. 11.3 m/min
Up speed	Max. 8.4 m/min
Weight	920 kg

Hose Reel	
Weight	2600 kg

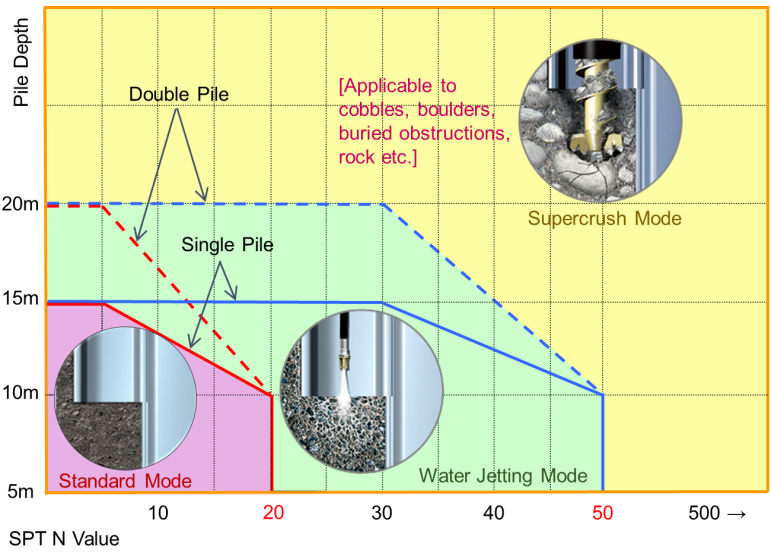
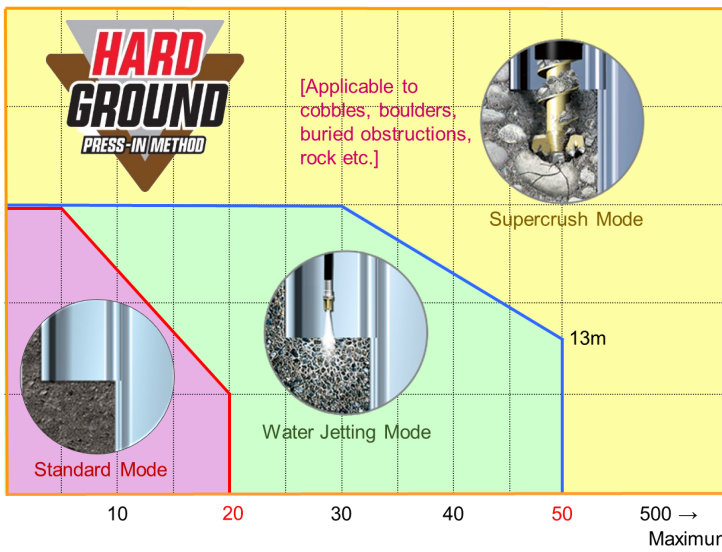


Giken F301 & ECO700S Silent Pilers



U Sheet Piles

Z Sheet Piles



Giken Reaction Base (Full GRB)

