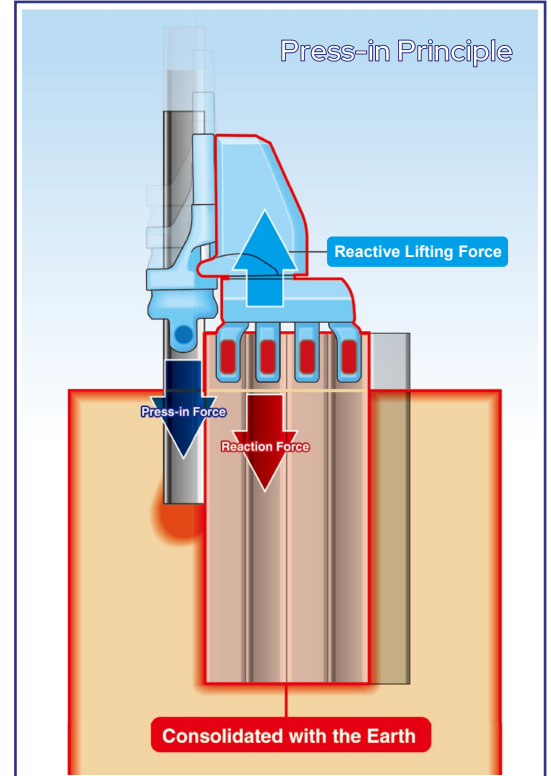
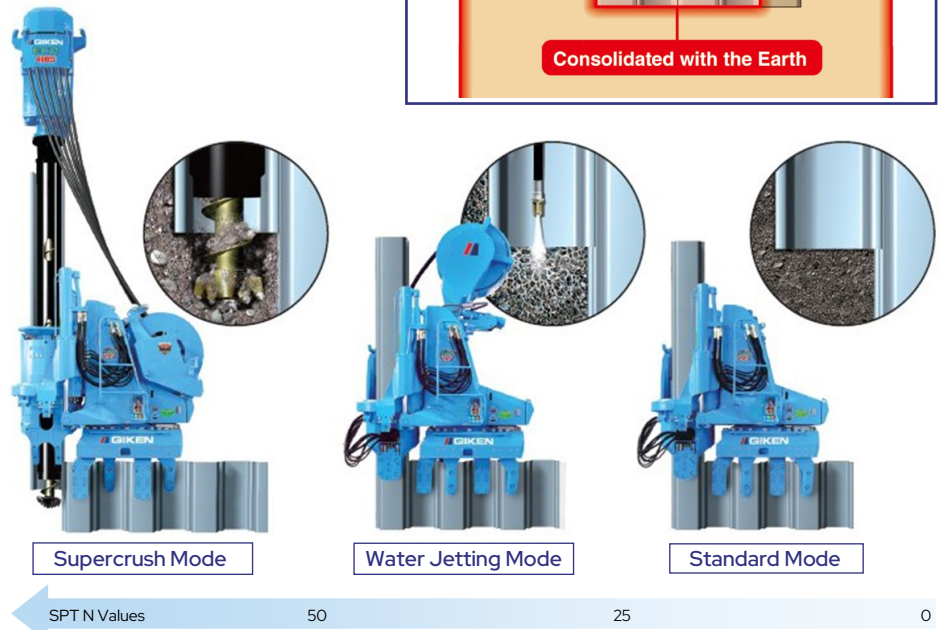
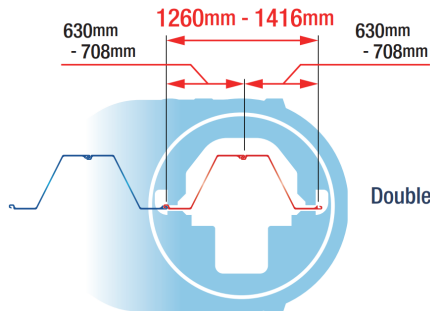


Giken SCZ-675WMG Silent Piler



The SCZ-675WMG is designed to press-in a pair of Z piles simultaneously, enabling a 1.4m section to be installed.

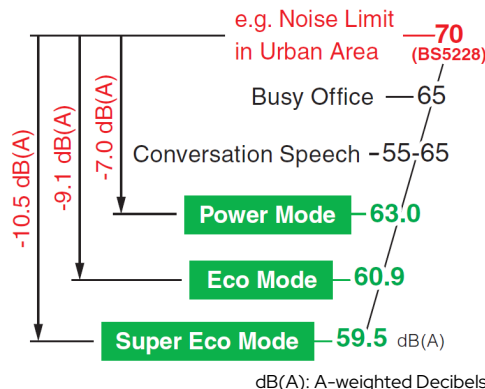


Low Emission Engine

The Giken Power Unit is designed to meet strict environmentally-friendly specifications, encompassing clean emissions combined with high combustion efficiency and Giken's hydraulic control technology.

Ultra Low Noise Levels

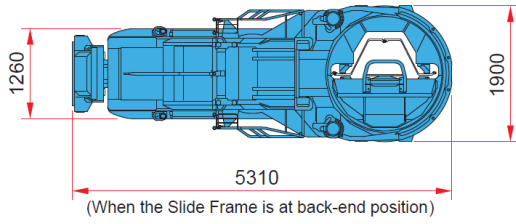
Designed to operate well within allowable construction noise levels



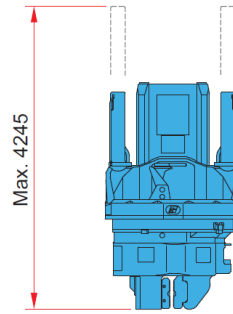
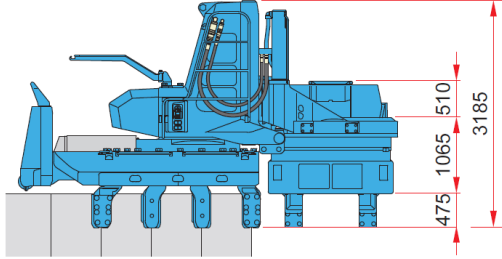
Standard Application of Bio-degradable Oil

Giken uses bio-degradable Piler Eco Oil and Piler Eco Grease as standard. Therefore, if hydraulic oil or grease is spilled into soil or water, there will be no environmental damage to the surrounding eco-system. In addition, our machines are painted with TX-Free non-lead paint*

* Environmentally-friendly paint which does not contain toluene, xylene or lead based pigment.



Standard Press-in Mode

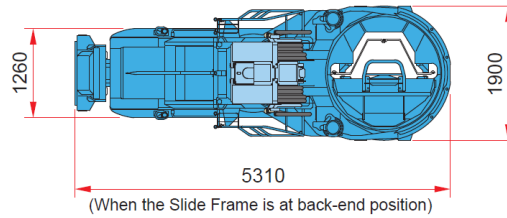


Giken SCZ-675 WMG	
Applicable piles ¹	560 - 708 mm
Maximum press-in force	
For 1st sheet pile	1300 kN
For 2nd sheet pile	400 kN
For 3rd sheet pile	700 kN
Maximum extraction force	
For 1st sheet pile	1400 kN
For 2nd sheet pile	500 kN
At corner work	800 kN
Stroke	1200 mm
Single press-in speed	2.1 - 23.2 m/min
Single extraction speed	1.7 - 18.9 m/min

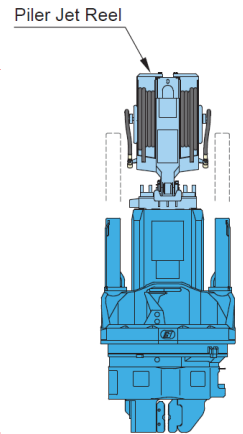
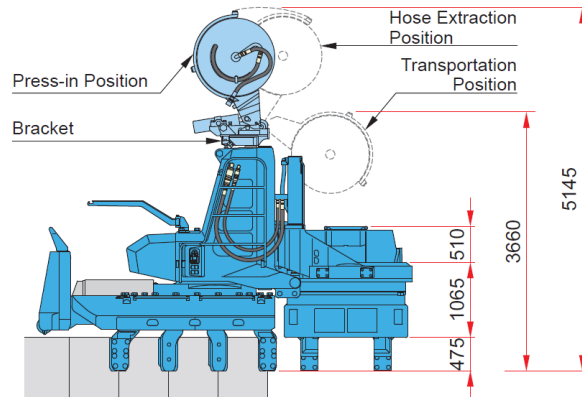
¹ Refer to the list of Applicable Sheet Piles

Piler Jet Reel	
Weight : Jet reel	1350 kg
Weight : Bracket	280 kg

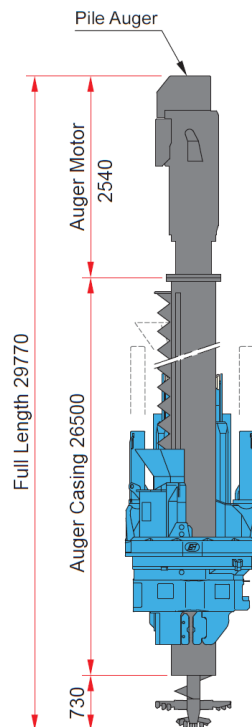
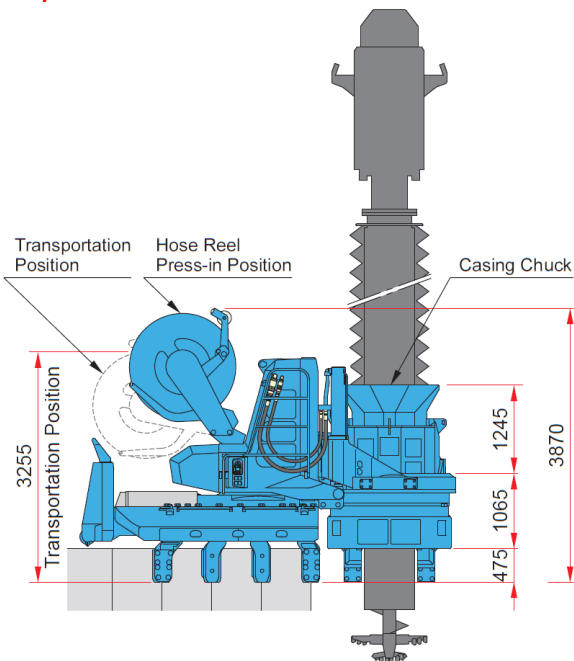
Hose Reel	
Hose length	30 m (Max 40 m)
Hose reel rewind	Max 5.5 kN
Weight	2750 kg



Water Jetting Mode



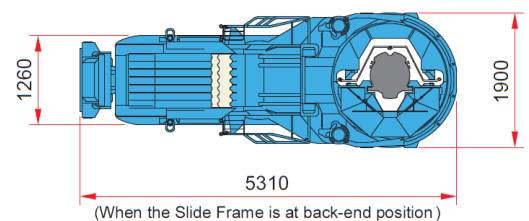
Supercrush Mode



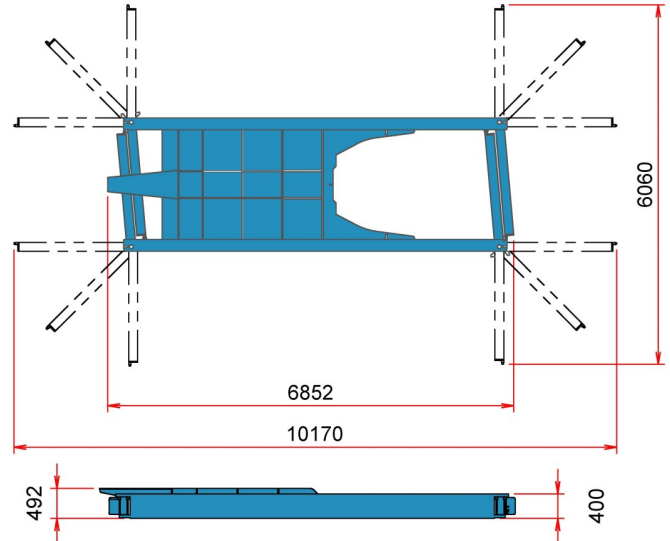
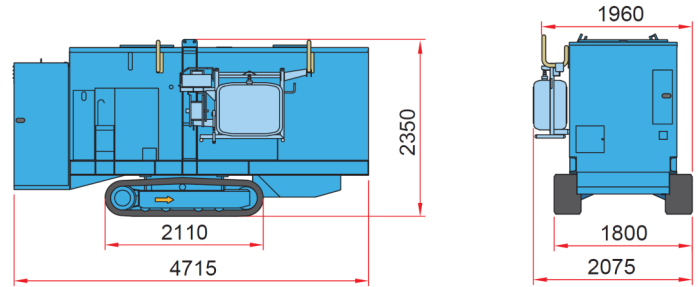
Pile Auger	
Applicable pile length	23 m
Max. auger torque	100 kN/m
Max. rotation speed	22 min ⁻¹

Total Machine Weight	
Standard press-in mode	22350 kg
Water jetting mode	23980 kg
Supercrush mode	27400 kg

² Excluding Pile Auger



Power Unit	
Power source	Diesel Engine - EU300G3
Rated output	Power mode: 230 kW / 1800 min ⁻¹
	ECO Mode : 204 kW / 1600 min ⁻¹
Fuel tank capacity	500 litres
Hydraulic reservoir	Piler ECO Oil 630 litres
Moving speed	1.4 km/h
Weight	7780 kg
Reaction Stand (with Levelling Jack)	
Weight	3900 kg



Applicable Sheet Piles for Giken SCZ-675WMG

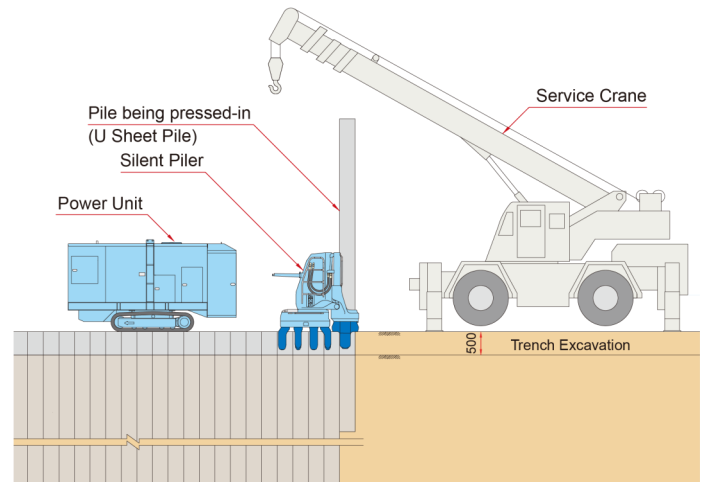
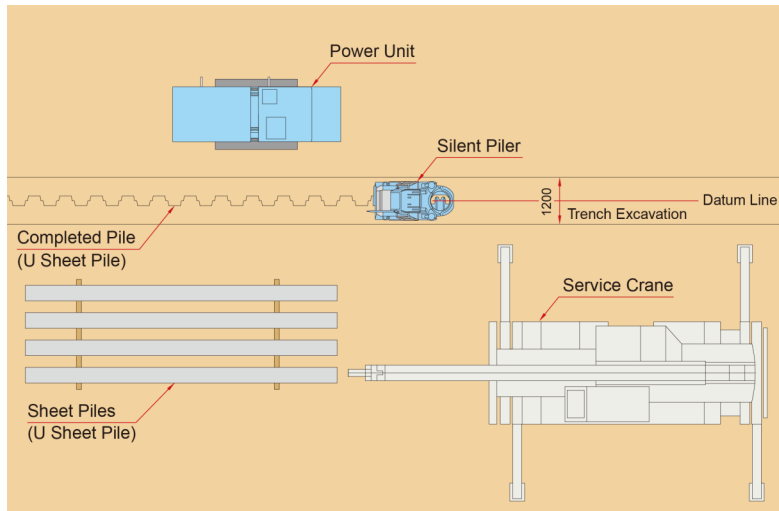
Z Sheet Piles	Section Width (mm)	SCZ-675WMG	
		ST / WJ	SC
Arcelor Mittal			
AZ18	630	⊙	⊙
AZ18 10/10		⊙	⊙
AZ26		⊙	⊙
AZ46	580	⊙	⊙
AZ48		⊙	⊙
AZ50		⊙	⊙
AZ12-700	700	⊙	⊙
AZ13-700		⊙	⊙
AZ13-700 10/10		⊙	⊙
AZ14-700		⊙	⊙
AZ17-700		⊙	⊙
AZ18-700		⊙	⊙
AZ19-700		⊙	⊙
AZ20-700		⊙	⊙
AZ24-700		⊙	⊙
AZ24-700N		⊙	⊙
AZ26-700		⊙	⊙
AZ26-700N		⊙	⊙
AZ28-700N		⊙	⊙
AZ36-700N		⊙	⊙
AZ38-700N		⊙	⊙
AZ40-700N		⊙	⊙
AZ42-700N		⊙	⊙
AZ44-700N		⊙	⊙
AZ46-700N		⊙	⊙
AZ48-700N		⊙	⊙
AZ50-700N	⊙	⊙	
AZ52-700N	⊙	⊙	



Key to Applicable Sheet Piles Table

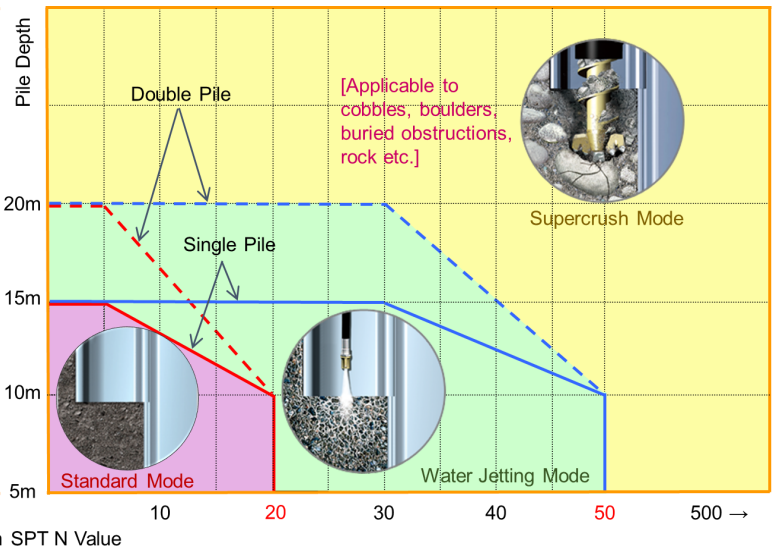
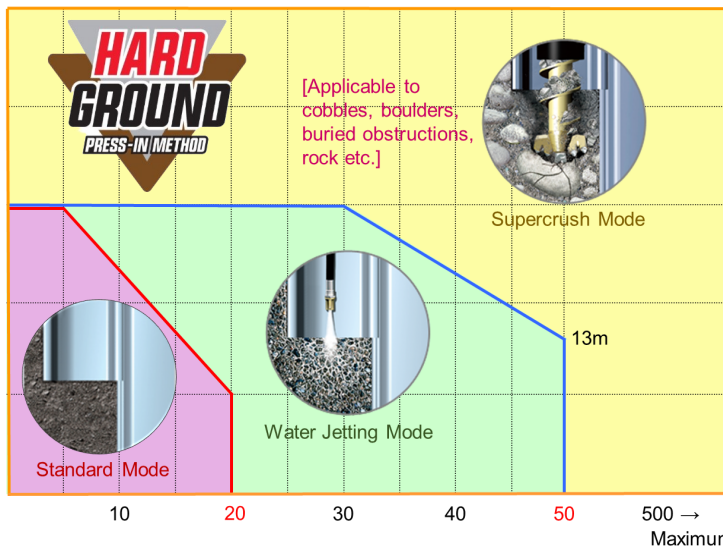
ST	Standard Mode	SC	Supercrush Mode
WJ	Water Jetting Mode	⊙	Applicable

Giken SCZ-675WMG Silent Piler



U Sheet Piles

Z Sheet Piles



Giken Reaction Base (Full GRB)

